

## **NONLINEAR CONTROL FOR ELECTROMAGNETIC SUSPENSION SYSTEMS ON ELASTIC GUIDEWAY**

Guowen Dai, Yougang Sun, Dashan Dong and Haiyan Qiang\*

<sup>1</sup> College of Logistics Engineering, Shanghai Maritime University, 201306, China.

Email: [hyqiang@shmtu.edu.cn](mailto:hyqiang@shmtu.edu.cn)

### **ABSTRACT**

In order to improve the control behavior of the electromagnetic suspension (EMS) system of the low-speed maglev train, this paper establish the train-guideway coupling non-linear dynamic model composed of the single electromagnet and the elastic guideway. Hurwitz stability criterion is utilized to prove the open-loop instability of the train-guideway coupling system. The vibration information of the guideway is input into the controller design and involved in the calculation of the control strategy. Simulation results show the presented controller can eliminate the vibration of the guideway and reduce the exacting requirements of system stability on the guideway properties. Moreover, the train-guideway coupling system with the presented controller shows better dynamic performance.

**Keywords:** Low-speed maglev train 1, Dynamic model 2, Coupling vibration 3, Nonlinear control 4.

### **1. INTRODUCTION**

The electromagnetic suspension (EMS) system [1] has been widely used in maglev passenger trains [2-3], magnetic bearing [4], bearingless motor [5-6], etc. The primary task of EMS systems is to eliminate the influence of gravity via electromagnetic forces, which can avoid contact, and thus, no friction. Due to its technological, comfortable and environmental attractions, the MAGLEV train has broad application and development prospects in the fields of the intercity transit and the urban traffic. Until now, the control of the EMS system, which is one of the key components of the MAGLEV train, still becomes the research focus. Due to the flexibility of the guideway, coupling effect will be generated between the vehicle and the guideway. If the performance of the EMS control system is less-powerful, strong coupling vibration may occur between the vehicle and the guideway endangering the stable suspension. Increasing the stiffness and damping of the guideway is the usual engineering application to eliminate this phenomenon. However, this will increase the cost of the MAGLEV line construction considerably. According to the statistics, the cost of guideway in the finished projects takes 60%-80% of the total MAGLEV system [7]

In recent years, much effort has been directed toward the area of dynamics and control of the EMS system. Golob and Tvornik simplified the EMS system to an electromagnet-ball system [8]. Xu et al. proposed a new nonlinear control method and implemented this method on the Shanghai Urban Maglev Test Line [9]. Tran and Kang proposed an arbitrary finite-time tracking control (AFTC) method to control the EMS systems with uncertain dynamics [10]. Ghosh et al.

modeled the MAGLEV system and proposed 2-DOF PID controller to overcome open-loop unstable [11]. Unfortunately, guideway was all assumed as a rigid body in these studies, which took the vibration of the MAGLEV system as self-excited oscillation caused by the parameters of the control system. However, experiment results indicated that deformation of the guideway was no longer taken as external disturbance with the powerful coupling vibration. Therefore, it is necessary to model the EMS system considering the flexible guideway. Zhou et al. derived stability criterion of the MAGLEV train running over flexible guideway by the means of Lyapunov characteristic numbers [12]. Fang et al. proposed LQG controller scheme to avoid coupling vibration between the MAGLEV vehicle and track [13]. Unfortunately, these studies didn't eliminate the coupling vibration actively from the point of guideway control. Thus, the system may be unstable with the smaller stiffness and damping of the guideway.

In this paper, we are motivated to model the EMS system considering the guideway flexibility, which facilitate the study of vehicle-guideway coupling vibration. A novel controller scheme is presented to eliminate the coupling vibration effectively, which can maintain the system's stability and reduce the exacting requirements of system stability on the guideway properties, thus massively reduce the construction cost.

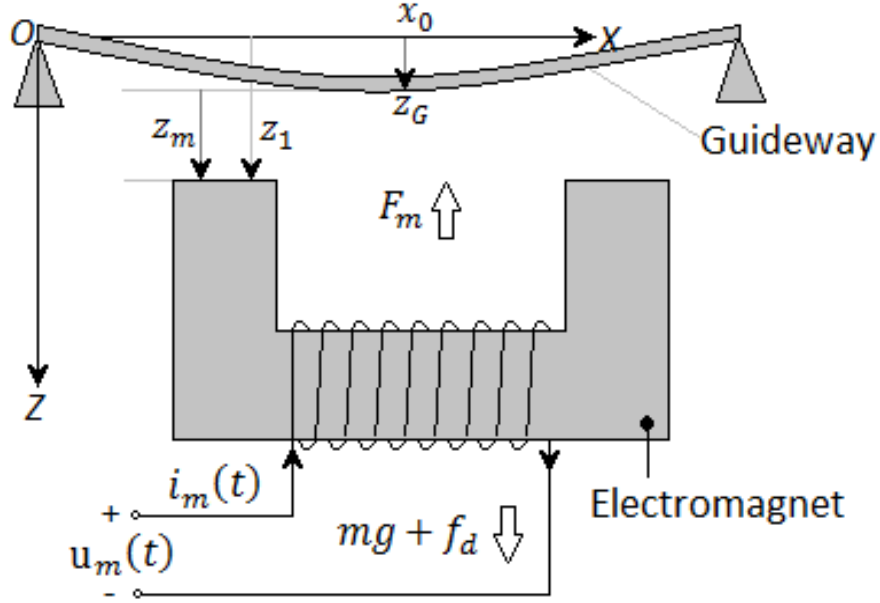
### **2. BASIC PRINCIPLE OF EMS SYSTEM**

Papers, including figures and tables, should be limited to about 8 camera ready pages. Please limit your paper by

writing concisely, not by reducing the figures to a size at which their labels will be difficult to read.

The MAGLEV train, as a new kind of high-tech transportation methods, is levitated by the electromagnetic suspension (EMS) system. In this paper, we are focus on the core part to ensure stable suspension, which called EMS

system composed by several single suspension modules with the same functions, and it is more versatile to analyze the dynamic model and control problem of single module of the EMS system [14-15] as presented in Fig.1.



**Figure 1.** Basic structure of EMS module with flexible guideway

By some physical laws (Kirchhoff's law and Newton's law), the nonlinear electromagnetic force  $F_m(t)$  and the electric equation of the electromagnet can be expressed as follows:

$$F_m(i_m, z_m) = \frac{\mu_0 N_m^2 a_m}{4} \left[ \frac{i_m(t)}{z_m(t)} \right]^2, \quad (1)$$

$$u_m = i_m R_m + \frac{\mu_0 N_m^2 a_m}{2z_m} i_m - \frac{\mu_0 N_m^2 a_m}{2z_m^2} i_m z_m$$

Where,  $\mu_0$  denotes permeability of air,  $a_m$ ,  $N_m$  denote the valid pole area and the number of turns of coil.  $i_m$ ,  $u_m$  and  $R_m$  denote current, voltage and resistance of coil, respectively,  $z_m$  denotes the suspension airgap.

### 3. DYNAMICS MODEL OF EMS SYSTEM WITH FLEXIBLE GUIDEWAY

#### 3.1 Model of Flexible Guideway

The manuscript will be printed by the offset printing process. The printed page will be approximately 95% of the original size. This should be accounted for when sizing small symbols and suffixes.

The guideway is usually simplified as Bernoulli-Euler beam.  $x_0$  denotes the electromagnet displacement from the origin of coordinates along the OX direction (see Fig.2),  $z_1$  denotes the vertical displacement of electromagnet along the

OZ direction.  $z_G$  denotes the vertical displacement of guideway. The vertical vibration of the guideway can be depicted as:

$$E_g I_g \frac{\partial^4 z_G(x,t)}{\partial x^4} + \delta \frac{\partial^5 z_G(x,t)}{\partial x^4 \partial t} + \rho_g \frac{\partial^2 z_G(x,t)}{\partial t^2} = F \sigma(x) \quad (2)$$

Where,  $E_g I_g$  denotes the bending stiffness,  $\delta$  denotes the damping coefficient,  $\rho_g$  denotes the linear density of guideway;  $\sigma$  denotes position function. If  $x = x_0$ ,  $\sigma$  and  $F$  are expressed as:

$$\sigma(x_0) = \begin{cases} 1 & x = x_0 \\ 0 & x \neq x_0 \end{cases}, \quad F = F_m(i_m, z_m) - mg - f_d \quad (3)$$

According to the theory of modal superposition, the solution of (2) can be expressed as follows:

$$z_G(x,t) = \sum \phi_i(x) \cdot q_i(t) \quad (i=1,2,\dots,\infty),$$

$$\phi_i(x) = \sqrt{\frac{2}{\rho_g l_g}} \sin\left(\frac{i\pi}{l_g} x\right) \quad (4)$$

Where,  $q_i(t)$  denotes the coordinate of  $i$ -orders mode,  $\phi_i$  denotes the  $i$ -orders modal function,  $l_g$  denotes length of guideway.  $\omega_i$  and  $\xi_i$  denote  $i$ -order modal frequency and damping ratio, respectively. The motion differential equation of guideway in regular coordinate system is represented as:



design the following state feedback control

$$\text{law: } U = -K_1 X_1 = -k_{11}q_1 - k_{12}\dot{q}_1 - k_{13}z_1 - k_{24}\dot{z}_1 - k_{25}\ddot{z}_1 .$$

The performance index function  $J_1$  is defined as:

$$J_1 = \lim_{T \rightarrow \infty} \frac{1}{T} \int_0^T [Y_1^T Q_1 Y_1 + u_m^T R_{u1} u_m] dt \quad (13)$$

Where,

$$Y_1 = \begin{bmatrix} z_m \\ \dot{z}_G \\ \ddot{z}_G \end{bmatrix}, \quad Q_1 = \begin{bmatrix} q_z & 0 & 0 \\ 0 & q_v & 0 \\ 0 & 0 & q_a \end{bmatrix}, \quad R_{u1} = r_1 . \quad (14)$$

$q_z, q_v, q_a$  and  $r_1$  represent the weighting coefficient of airgap, velocity, acceleration and voltage of electromagnet..

When voltage  $u_m$  satisfies  $u_m = -K_1 X_1 = -R_{u1}^{-1} B_1^T P X_1$ , the  $J_1$  obtains the minimum value, and  $P$  is the solution of Riccati equation:  $-PA_1 - A_1^T P + PB_1 R_{u1}^{-1} B_1^T P - Q_1 = 0$

Where,  $R_{u1} = 1$ , matrix  $A_1, B_1$  and  $Q_1$  are presented as follows:

According to Table 1, the feedback coefficient vector of the designed controller could be calculated as

$$K_1 = [-1761.5 \quad 35.2 \quad -6093.9 \quad -304.8 \quad -14.1] \quad (15)$$

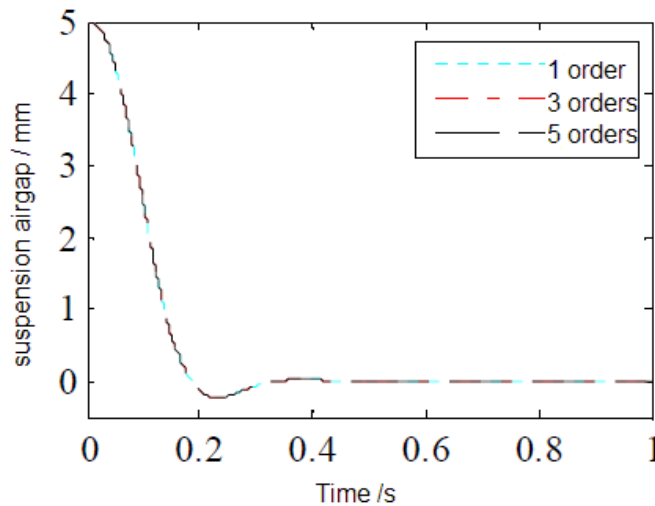
**Table 1.** Parameters values of the coupling system

physical quantity	Value	physical quantity	Value
Mass of electromagnet $m / \text{kg}$	750	Permeability of air $\mu_0 / (\text{H} \cdot \text{m}^{-1})$	$1.26 \times 10^{-6}$
Number of turns in the coil $N_m$	356	Leakage permeance $\eta$	0
Pole area of the coil $a_m / \text{m}^2$	0.021	Bending rigidity $E_g I_g / (\text{N} \cdot \text{m}^{-2})$	$2.69 \times 10^{10}$
coil resistance $R_m / \Omega$	1.0	Damping coefficient $\delta / (\text{N} \cdot \text{s} \cdot \text{m}^{-1})$	$8.56 \times 10^5$
Stable suspension airgap $z_N / \text{m}$	0.01	Linear density $\rho / (\text{kg} \cdot \text{m}^{-1})$	2000

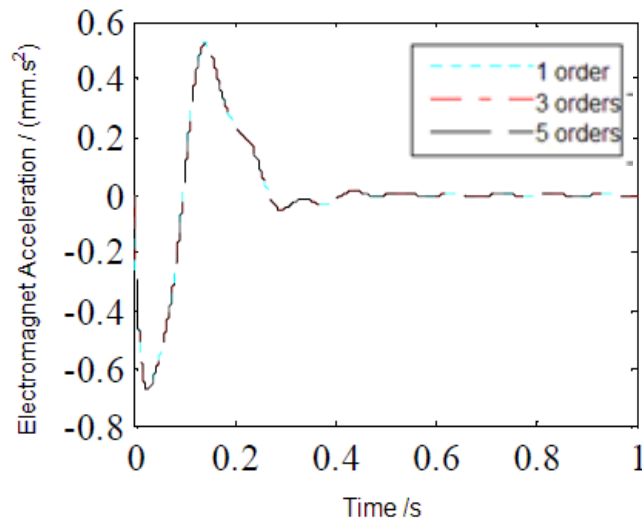
## 5. SIMULATION RESULTS

The first-order, first 3-orders, and first 5-orders modes of the guideway are utilized to describe the dynamic characteristic of guideway. The parameter values are shown in

Table 1. The distance between the initial position of electromagnet and the equilibrium point is 5mm. The simulation time is 1 sec. The time domain response of system is calculated in MATLAB. The simulation results are shown in Fig.2-Fig.3.



**Figure 2.** Suspension airgap



**Figure 3.** Vertical acceleration of the electromagnet

It can be seen from Fig.2-Fig.3 that if we set the stable region to 2%, the suspension airgap could completely enter the stable region in 0.28 sec and the maximum overshoot is about 2.5%. The vibration of electromagnet and guideway could attenuate quickly with the designed control law. The system is stable and shows excellent dynamic performance.

Since there is no obvious difference between the results of different modal orders of the guideway, it is reasonable to describe the vibration state of guideway with a low order mode in feedback state.

## 6. CONCLUSION

In this paper, a nonlinear mathematical model and novel control method have been presented for the nonlinear EMS system with flexible guideway. The open-loop instability of the coupling system has been proved by Hurwitz stability criterion. The vibration of guideway is introduced into the control system and the simulation results have been presented to demonstrate that the designed controller can not only ensure the electromagnet suspend steadily, but also eliminate the vibration of guideway, which means a lower request for the quality of guideway in maglev lines and the lower construction cost. Furthermore, future efforts will be directed at applying the proposed control strategy to the practice

## FUNDING

This research is supported by Key Projects in the National Science & Technology Pillar Program of China. (2013BAG19B00-01), Key Projects in the National Science & Technology Pillar Program during the Twelfth Five-year Plan Period (2011BAJ02B00).

## REFERENCES

[1] Hurley, W.G. and Wolfle, W.H., 1997, Electromagnetic design of a magnetic suspension system, *IEEE Transactions on Education*, 40(2), 124-130. DOI: [10.1109/13.572325](https://doi.org/10.1109/13.572325).

[2] Hederic Z., Sostaric D., Horvat G., 2013, "Numerical calculation of electromagnetic forces in magnetic actuator for use in active suspension system for vehicles," *Tehnicki Vjesnik-Technical Gazette*, 20(1), 73-77.

[3] Li J.H., Zhou D.F., Li et al., 2015, "Modeling and simulation of CMS04 maglev train with active controller," *Journal of Central South University*, 22(4):1366-1377. DOI: [10.1007/s11771-015-2654-z](https://doi.org/10.1007/s11771-015-2654-z).

[4] Denk J., 2015, "Active Magnetic Bearing Technology Running Successfully in Europe's Biggest Onshore Gas Field," *Oil Gas-European Magazine*, 41(2): 91-92.

[5] Zurcher F., Nussbaumer T., Kolar J.W., 2012, "Motor torque and magnetic levitation force generation in bearingless brushless multipole motors," *IEEE-ASME Transactions on Mechatronics*, 17(6):1088-1097. DOI: [10.1109/tmech.2011.2159511](https://doi.org/10.1109/tmech.2011.2159511).

[6] Asama J., Hamasaki Y., Oiwa T., and Chiba A., 2013, "Proposal and Analysis of a Novel Single-Drive Bearingless Motor," *IEEE Transactions on Industrial Electronics*, 60(1):129-138. DOI: [10.1109/tie.2012.2183840](https://doi.org/10.1109/tie.2012.2183840).

[7] Zhang S.Y., 2009, "The design of digital control method for MAGLEV," M.E. Thesis, Tongji University, Shanghai, People's Republic of China.

[8] Golob M., Tvornik B., 2003, "Modeling and control of the magnetic suspension system, *Isa Transactions*," 42(1):89-100. DOI: [10.1016/S0019-0578\(07\)60116-5](https://doi.org/10.1016/S0019-0578(07)60116-5).

[9] Xu J., Zhou Y., 2011, "A nonlinear control method for the electromagnetic suspension system of the maglev train," *Journal of Modern Transportation*, 19(3):176-180. DOI: [10.1007/BF03325756](https://doi.org/10.1007/BF03325756).

[10] Tran X.T., Kang H.J., 2014, "Arbitrary finite-time tracking control for magnetic levitation systems," *International Journal of Advanced Robotic Systems*, 11:1-8. DOI: [10.5772/58986](https://doi.org/10.5772/58986).

[11] Ghosh A., Krishnan T.R., et al., 2014, "Design and implementation of a 2-DOF PID compensation for magnetic levitation systems," *ISA Transactions*, 53(4):1216-1222. DOI: [10.1016/j.isatra.2014.05.015](https://doi.org/10.1016/j.isatra.2014.05.015).

[12] Zhou Y.H., Wu J.J., Zheng X.J., 2000, "Analysis of dynamic stability for magnetic levitation vehicles by Liapunov characteristic number," *Acta Mechanica Sinica*, 32(1):42-51.

- [13] Fang M.X., TU J., Feng Q., et al., 2001, "Dynamics research of maglev train on elastic guideway," *Noise and Vibration Control*, 21(6):23-26.
- [14] Yau J.D., 2009, "Vibration control of maglev vehicles traveling over a flexible guideway," *Journal of Sound and Vibration*, 321(1-2):184-200. DOI: [10.1016/j.jsv.2008.09.030](https://doi.org/10.1016/j.jsv.2008.09.030).
- [15] Su X., Yang X., Shi P., Wu L., 2014, "Fuzzy control of nonlinear electromagnetic suspension systems," *Mechatronics*, 24(4):328-335. DOI: [10.1016/j.mechatronics.2013.08.002](https://doi.org/10.1016/j.mechatronics.2013.08.002).
- [16] Sun Y.G., Li W.L., Dong D.S., Mei X., Qiang H.Y., 2015, "Dynamics analysis and active control of a floating crane," *Tehnicki Vjesnik-Technical Gazette*, 22(6). DOI: [10.17559/TV-20151026154842](https://doi.org/10.17559/TV-20151026154842).