

Effect of a Rigid Gas Diffusion Media Applied as Distributor of Reagents in a PEMFC in Operation, Part I: Dry Gases

C.M. Bautista-Rodriguez^{1,*}, M.G.A. Rosas-Paleta¹, J.A. Rivera-Marquez², A.B. Tapia-Pachuca¹ and J.R. Garcia de la Vega³

¹Alter Energías Grupo, Tepetitlán No. 63, Col Lomas del Sur, 72470 Puebla, Puebla.

²BUAP. Facultad de Ingeniería Química. Av. San Claudio y 18 Sur -CU-, 72590 Puebla, Puebla.

³UHDE de Engineering de México S.A. Paseo de las Palmas 405. CP 11000 Lomas de Chapultepec, DF. México.

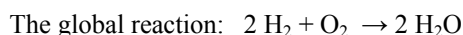
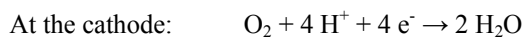
Received: November 07, 2009, Accepted: February 08, 2010

Abstract: Several mass transport phenomena develop during the operation of a PEMFC; each one of this generates a mechanical - physics resistance to some extent, implying limitations during operation. In a conventional PEMFC, the feeding reactive gases to the reaction sites are conducted by a series of elements such as: channels in gas distributor, diffusion layer on the electrodes and the active layer. Inside of this elements reagents concentration gradients are generated before arriving to the active sites. Additionally, at high values of current density, the resistance to the mass transport of reagents is increased by the presence of water-product in the pores of electrodes, reducing significantly the performance of the PEMFC. This work focuses on reducing the resistance to mass transport by applying a rigid gas diffusion media including as gas distributor including a high number of macropores. This gas distributor is manufactured using a composite commercial material (carbon and graphite powders). The results show significant effects on the zone of diffusion in the PEMFC polarization curves, it is possible to reduce the mass transport limitations at high current density, however the ohmic losses zone on the polarization curves show an important electro-conductive limitation due to a deficient matrix.

Keywords: Polar plates, Flow Gas Distribution, Gas Diffusion Media, PEMFC Performance, Power.

1. INTRODUCTION

The electrochemical device Proton Exchange Membrane Fuel Cell (PEMFC) is an electrochemical reactor that converts in a direct way chemical energy into electrical energy. Commercial applications of PEMFC are provided in mobile services such as automobile, maritime and mobile phones among others. Particularly PEMFC offers zero rate of pollution and high energy efficiency, usually uses hydrogen as fuel and oxygen as oxidizer (it is desirable to use oxygen from the air). This device operates at temperatures below 120 °C and pressures in the range of 1 to 5 atmospheres, required for large-scale commercial application, the smaller volume of the major energy supply; this makes it necessary to operate the higher current density on the electrodes. Thus, in the case of a PEMFC using H₂ and O₂, the two semi-reactions at the respective electrodes and the global reaction can be written as follows:



The global reaction in the electrochemical process on a PEMFC has an exchange of 4 electrons per molecule of oxygen in an operating point (in voltage and current) dependent on the external load. The kinetics of the reaction is stimulated by the impregnation of metallic catalysts (usually noble metals: Pt, Ru, etc...) dispersed in the form of nano-particles supported on carbon powders. A fuel cell type PEMFC consists basically in: i) an Membrane-Electrode Assembly (MEA), ii) gas distribution plates (polar plates) and iii) mechanical support plates. The ideal performance of a PEMFC fuel cell depends of the number of electrochemical reactions and is defined by the Nernst's Potential (equation 1) where the pressure and temperature in operation are key parameters. In the other hand, the functionality of a PEMFC is typically characterized by a po-

*To whom correspondence should be addressed:

Email: celso.bautista@thyssenkrupp.com

Phone: +52(55) 52840200. Fax: +52(55) 5284 0275

larization curve (I-E), which includes 4 areas classified as: i) zone of irreversible losses by the electrochemical reaction itself, ii) area activation losses by the electrocatalyst used, iii) area of ohmic losses in the triple contact zone (interphase platinum-carbon-electrolyte) and iv) the diffusion losses area (mass transport limitations) [1-3].

$$E = E^0 + \frac{RT}{2F} \left[\ln \left(\frac{P_{H_2}}{P_{H_2O}} \right) + \ln \left(\sqrt{P_{O_2}} \right) \right] \quad (1)$$

The PEMFC efficiency is limited by various transport and kinetic phenomena, such as: i) electrochemical kinetics, particularly the oxygen reduction reaction, ii) mass transportation phenomena as the diffusion of species (H_2 , O_2 , water and N_2 if using air) in gas phase through the pores of the electrodes, iii) the dissolution of species in the electrolyte membrane, moreover migration of ionic species (H^+) and electronic flow (e^-), finally iv) the water management product of the reaction [1-6].

The mass transport phenomena (conduction and diffusion) generated by a PEMFC in operating are developed mainly on channels of distribution plates (mass conduction), where the reactive gases enter to the diffusion layer of porous electrodes (diffusion). In the distribution channels of reactive gases, the transport phenomena currently considered by the literature, are: i) pressure drops, ii) variability in the profiles of speed of the gas flow, iii) variability in the profiles of flow direction and distribution of reagents, iv) variability in the flow density of the gases by changes in the steam pressure of water product at the cathode and its diffusion to the anode, v) dilution of the concentration in the reagents flow along of the distribution channels by consumption, vi) flood (the main cause of falls in the functionality of the PEMFC at high current densities), due to of barriers caused by the liquid water trapped in the pores of electrodes, these barriers reach to cause dead zones on the active area of the electrodes by reducing the effective reactive area, vii) direction of mass flow within the distribution channels, viii) variability in concentration and density of the gas by changes in the pressure (the consumption of reagents and generation of products), ix) non-uniform distribution of reagents on the active layer of the electrodes due to the mechanical conditions between the distribution channels and the diffusive layer (resulting in a heterogeneous distribution of current and potential on the electrode area, is particularly significant in function of the increased surface. Determinants factors of these variables mentioned are the operating conditions of the PEMFC and the geometry of the channels of distribution in where; an inefficient design of flow field can cause a decrease in the use of reactive gases and an inefficient system of drainage of products reduce the active area of the electrode by the generation of concentration gradients in the flow of reagents), x) on the other hand, the use of oxygen from air as fuel represents a dilution in the concentration of oxygen in the stream gas (to develop a low partial pressure of oxygen, which restrains the reduction reaction of oxygen and impacts the efficiency and power developed by the PEMFC) [7-17]. Particularly for the gas distributor with serpentine channels some studies [15,18], suggest the presence of concentration gradients of reagents on the active layer of electrodes, including the presence of dead zones (without reaction) for heterogeneous distribution of reagents due to the wide the walls between

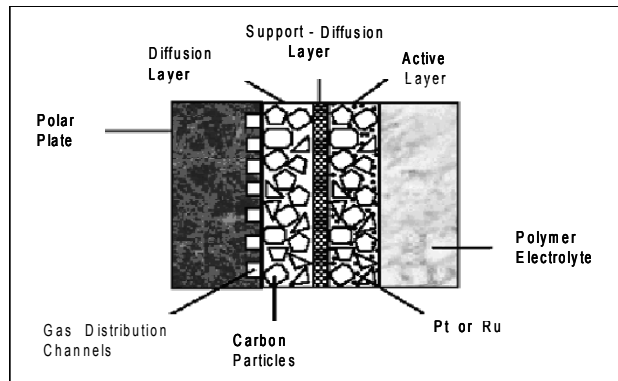


Figure 1. Schematic of a porous electrode used in conventional PEMFC.

channels on the area of the electrode. Dutta and coworkers confirmed the presence of concentration gradients along the channels; their mathematical models also suggest the presence of different flow profiles based on the distance between the bottom of the channel and the electrode surface, including vortex. The direction in the transport of water in the channels alters the density of local currents, mainly in the cathode, where water is generated from the reaction product. The distribution of reactive gas flow is affected by consumption patterns in areas closest to the electrode surface. An interesting result is the determination of pressure drops in channels of distribution, lower than expected for both gases [17-18].

The commercial electrodes used in technology PEMFC (Figure 1) are type porous and typically consist of three structural layers of materials of different nature, these constituents are assembled in succession way until to get a thickness of approximately 0.5 mm [19]: i) the diffusion layer, the second layer and ii) support flexible mechanical and iii) the active layer. The diffusion layer (Figure 2.a) is composed of porous carbon particles with an size approximately of 0.1 μm , this acts as a means to transport electrical power, mechanical support to anchor the inner layers and electric contact with the gas distributor (mono or bipolar plate). The middle layer (support - diffusion, see Figure 2.b) consists of a physical mixture of carbon tissue and Polytetrafluoroethylene (PTFE), this polymer ensures the structural strength and a solid character for the electrode, the polymer also provides a cohesive nature between carbon tissue and agglomerated porous carbon particles, providing hydrophobic means to electrodes. In general, diffusion and intermediate layers allow the distribution of gases into the active layer and the conduction electrons. The approximate electrical resistance of the first layer corresponds to 50 $\Omega \cdot cm$. The new technologies reduce the resistivity a 2 $\Omega \cdot cm$, however graphite tissue allow lowest resistivity of 0.5 $\Omega \cdot cm$. The third layer (Figure 2.c), where is achieved electrochemical reactions and the means which secures the triple contact, showing a hydrophobic character in the evacuation and a absorbing means of water for hydration of Nafion[®] membrane. This layer usually consists of porous carbon particles loaded with nanoparticles (2-10 nm) of platinum deposited. The diameter of the porous carbon particles is determined between 20 - 40 \AA , while the load in platinum is determined between 0.2 - 0.4 mg/cm^2 .

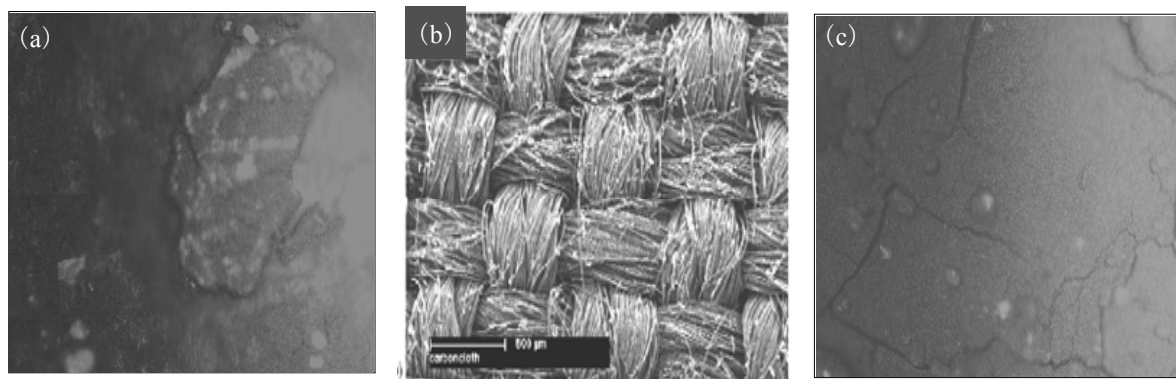


Figure 2. Image of the basic structures of the porous electrodes type Sorapec: (a) Diffusion layer 20×0.45 increases, (b) carbon tissue at 500 mm in scale, (c) active layer with Nafion Film 20×0.45 increases.

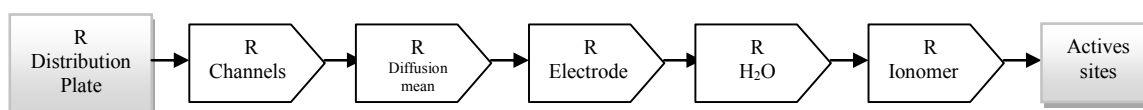


Figure 3. Schematic of mass transport resistances in series proposed by Beuscher [18].

The conjunction of these materials generates a media known as "active layer" which is partially flooded by Nafion solution. The thickness of the active layer depends of the proportion of loading of Pt (between 25 - 100 μm). The impregnation of active layer of the electrode by the electrolyte (Nafion film) may vary between 0.8 - 1.9 mg/cm^2 [5, 19-28].

The mass transport limitations considered in the gas diffusion media of commercial porous electrodes, are: i) diffusion limitations of reagents and products (water and waste gas) as a function of pore diameter, and ii) limitations of electrical conductivity. The nature, characteristics and proportions of materials exert effects on limitations in the transport field. In the nomenclature of E-Tek materials for the diffusion layer includes black carbon with 35% PTFE and this is known as the XC35 or XC72. The diffusion layer in the E-Tek electrodes counts with a thickness of 0.5 to 1 mm. The presence of PTFE in the diffusion layer is due to three functions: i) to form a large area of carbon particles in a cohesive layer, ii) to form channels or pores, and iii) to provide a hydrophobic character to the layer diffusion. In the other hand, the predominant mass flow through the tiny pores in the diffusion layer is type Knudsen, this occurs in pore diameters between 2-50 nm in which the molecules of a fluid collide with pore walls [24, 28]. Antolini and coworkers demonstrated a significant impact on the operation of a PEMFC based on the content of PTFE in the diffusion layers and reaction of the electrodes, with an optimal combination (15% wt diffusion / 30% wt reaction) at the operation conditions of the study, but at concentrations greater than 45 % wt decreases the efficiency of the PEMFC due to obstruction in the passage of reagents to the catalytic layer [28]. In the other hand, Beuscher shows an adverse effect to the operation of PEMFC based on the thickness of the diffusion layer in the electrodes, in addition, the author proposes a model to measure the resistance to mass transport [18]. The model proposes that the total resistance to transport is composed of sev-

eral resistances in series (Figure 3). The results show that less than 50% of the total resistance to mass transport is due to the amount of resistance in: the channels of distribution, the gas diffusion (diffusion layer) and the active layer in the electrodes. Moreover, describes concentration gradients of reagents gases through the diffusive mean, which leads to a heterogeneous distribution on the active layer of the electrodes.

Kong and coworkers have reported a methodology to generate porosity in the diffusive layer of the electrodes; the Li_2CO_3 added in the preparation of the diffusive layer can generate mainly macropores to be subjected to heat treatment [8]. The immediate effect is observed in the area of diffusion of the corresponding polarization curves, being the obvious reduction of resistance to the diffusion of reagents and products between the active layer and the polar plate. The presence of significant numbers of macropores allows the diffusion of reaction product, allowing lower diffusion resistance of reagents to the area of catalytic electrodes. The global effect is a higher current density and in consequence the power of the PEMFC increases. Additionally, the authors propose an effect in the morphology of the diffusion layer on the active layer of the electrode and the capacitive double layer, showing an influence on the effective area of reaction.

This work focuses on the effect to functionality of a PEMFC by applying a rigid gas diffusion media (RGDM) in commercial graphite used as a distributor of reagents. The membrane-electrode assembly consists of a Catalyst Coated Membrane Assembly (CCMA) and graphitized paper as diffusion layer. Figure 4 shows a diagram of the PEMFC model used for this study. The purpose is to increase the effective area of reaction and reduce resistance to the diffusion of gases and products. We will consider the application of mesoporous and macropores in the RGDM distributor, thus the effects on the functionality of a PEMFC: H_2 - O_2 are presented and discussed.

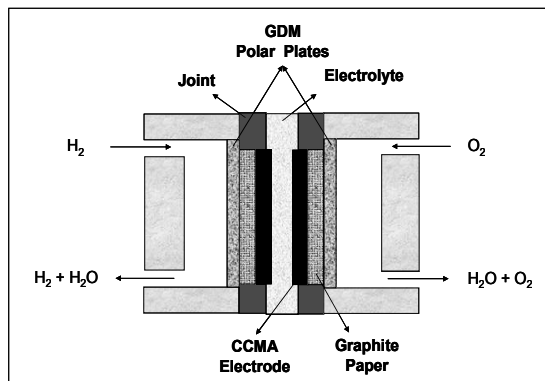


Figure 4. Scheme PEMFC experimental using a rigid gas diffusion media as reagents distributor.

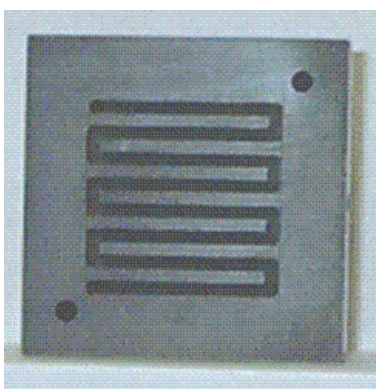


Figure 5. Polar plate used in a conventional PEMFC.

2. EXPERIMENTAL

A PEMFC conventional design with monopolar plates with serpentine channels as reagents distributor and supported on copper plates is reported in a previous work [29]. Figure 5 shows an image of the polar plate used in the traditional PEMFC used in this study. The dimension of its channels is $30 \times 30 \times 2$ mm while the dimensions of the plate are $50 \times 50 \times 10$ mm.

The structural design of the experimental PEMFC used in this study consists of a metallic support manufactured in two Cu plates with dimensions of $50 \times 50 \times 10$ mm with suitable recess to have a RGDM in commercial graphite reused (Helwing Carbon Co, Grade H used in furnaces) as distributor of reagents gases and current collector, its dimensions are $30 \times 30 \times 3$ mm. Between the support in Cu and porous graphite plate is a empty chamber of 2 mm in order to allow the reagent gas to cover the surface of the reaction zone. Figure 6 shows optical microscopy images (Nikon Eclipse MA-100) on both sides of the RGDM used. These images show a greater diameter and large number of pores compared to the one found in the diffusion layer of electrodes Sorapec (Figure 2.a) and those presented by Kong and colleagues [8].

The opposite side to CCMA assembly contains two threaded holes 9 mm in diameter for feeding reagents gases, residual purge and products respectively. A piece of commercial graphitized paper (Toray) with surface dimensions equal to 14×14 mm is used as a

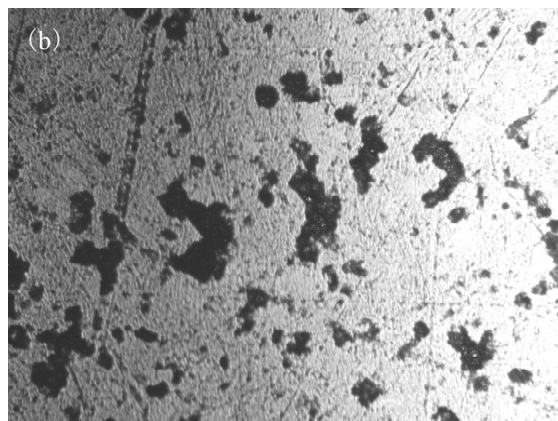
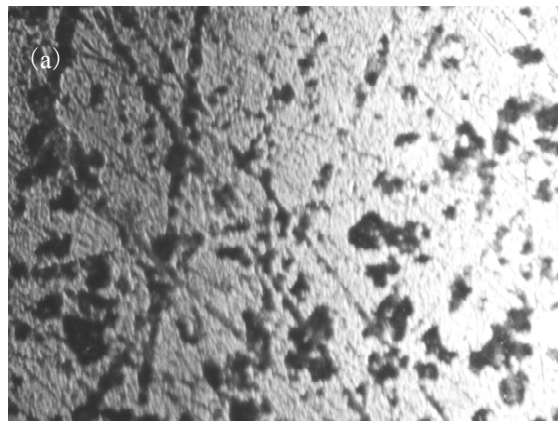


Figure 6. Optical microscopy of the RGDM in graphite on both sides at 20×0.45 increases.

diffusion layer. Figure 8 shows the structure of graphitized paper, with superimposed layers of paper and carbon fiber, the former include porosity where the diffusion of gases take place while the latter have openings where the mass transportation is realized (convective process).

On both sides of the CCMA electrode are placed together in Viton to avoid leaks of the reagents, cut a hole in the center of the surface with an equivalent area to graphitized paper for free passage of reagents and products. In the other hand, the electrolyte membrane was Nafion[®] 112, its thickness of approximately 50.8 μm [3, 9, 10] and the area of the electrolyte used is equivalent to 35×35 mm. The CCMA used in this work has been developed by the Department of Chemistry, CINVESTAV [30], the main features of preparation are: using an ink prepared with 2.5 mg of platinum (E-Tek), mixed with 1 mg of carbon powder (Vulcan XC-72, Cabot) with a 5% film Nafion in ethanol solution (not use Teflon). This ink is applied on the reactive area defined by spraying with air compressed on the Nafion membrane. This procedure is used at both sides of Nafion membrane as electrodes (anode and cathode). The CCMA with graphite paper was performed by thermal-pressure at 135°C and 16 Kg/cm^2 [29, 30]. Figure 7 shows optical microscopy images (Nikon Eclipse MA-100) of CCMA surface. Both images show the channels formed by the paper fibers on CCMA surface during thermal-pressure.

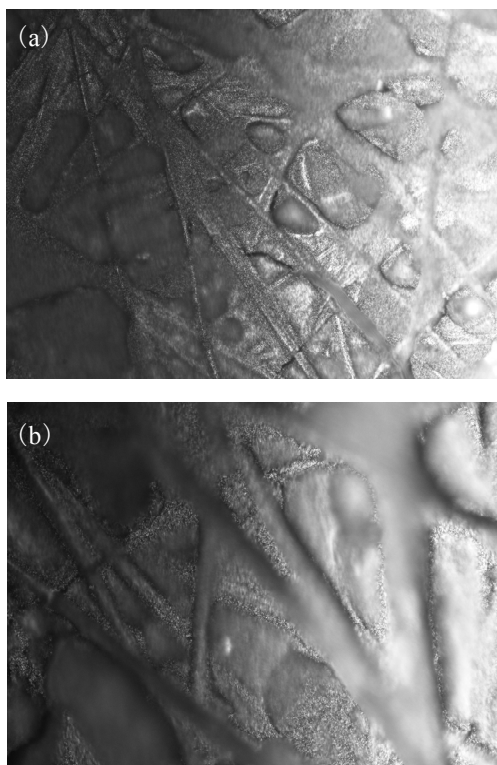


Figure 7. Optical microscopy on the surface of graphitized paper at 20×0.45 increases.

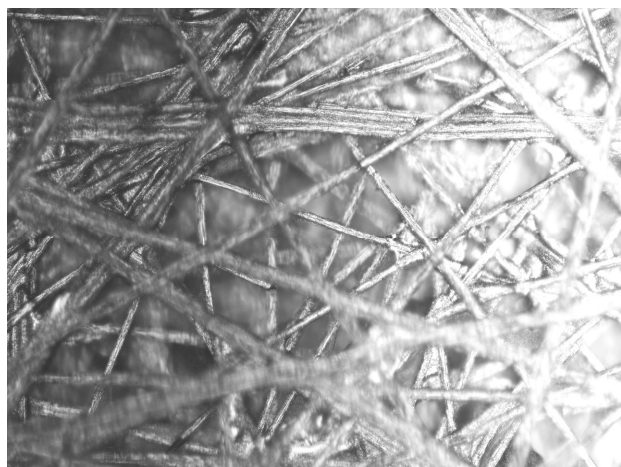


Figure 8. Optical microscopy on the surface of the electrode CCMA (a) 10×0.4 increases and (b) 50×0.8 increases.

The same CCMA was used in all experiences described in this work for both PEMFC systems (conventional and experimental). The Figure 9 shows the CCMA surface, its porosity is observed similar as Sorapec electrodes (Figure 2.c). The fuel gas and oxidizer feeds to the PEMFC was of high purity (H_2 and O_2 at 99.9 %). The characterization of PEMFC was performed on a test bench model Fuel Cell Test System Globe Tech Compu-Cell GT-890-B. Experimental conditions imposed on the PEMFC for this study

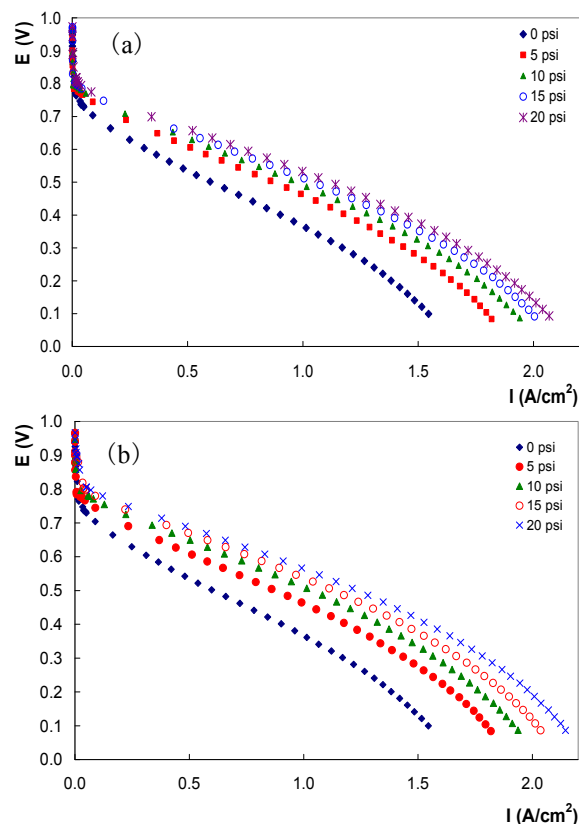


Figure 9. Polarization curves of a PEMFC: (a) Variable cathodic pressure with fixed anodic pressure at 5 psi and (b) equivalent pressure in both compartments (anode and cathode).

were: gas flow at 50 cc / min to dry conditions, ambience temperature has been imposed on the PEMFC ($23\text{ }^\circ\text{C}$) while the pressure in the reagents gases was variable for each case. The present study using an experimental design 2^k combining two types of distributors of reagents gases by varying the pressure of the reagents gases from 0 to 40 psi to analyze the effects on the functionality of PEMFC based on the characteristics of mass transport (conduction and diffusion) of reagents. Surface response graphics has been obtained with Statgraphics Plus v. 4.1, software and electrical resistance measures have been obtained with a multimeter BK Precision model Test Bench-390A. The surface response methodology used has been reported in previous papers [32, 33].

3. RESULTS AND DISCUSSION

The electrical characteristics of the PEMFC registered at maximum values of electric power for the experimental conditions are shown in Table 1. A tendency for identifying the best electrochemical PEMFC system is not easy to observe in the values of this table.

Figure 10 shows the polarization curves for the PEMFC operating with serpentine channels as reagents distributor at different gas pressure condition on the electros. Figure 10.a presents the functionality of the PEMFC as a function of cathodic pressure, keeping the anodic pressure at 5 psi. Figure 10.b shows the polarizations

Table 1. PEMFC Electrical characteristics observed at experimental conditions.

Pressure Psi	Cathode Pressure			Equivalent Pressures			Cathode Pressure			Equivalent Pressures		
	P (W)	E (V)	I (A/cm ²)	P (W)	E (V)	I (A/cm ²)	P (W)	E (V)	I (A/cm ²)	P (W)	E (V)	I (A/cm ²)
5	1.90	0.40	1.176	1.90	0.40	1.18	---	---	---	2.41	0.44	1.095
10	2.08	0.40	1.276	2.16	0.43	1.27	1.97	0.39	1.00	2.43	0.41	1.187
15	2.20	0.41	1.339	2.33	0.44	1.30	2.09	0.38	1.10	2.28	0.41	1.166
20	2.31	0.41	1.399	2.51	0.45	1.41	2.33	0.40	1.16	2.50	0.43	1.160

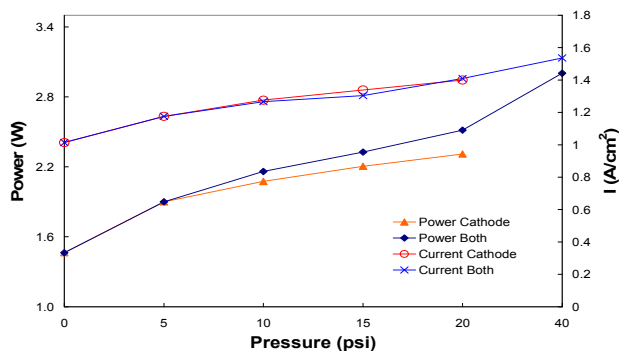


Figure 10. Graphic comparative between power and current density, both in function of conditions of varying pressure on the cathode and pressures equivalent in the compartments (Both).

curves for the same system with equal pressure in both compartments ($P_{\text{cathode}} = P_{\text{anode}}$). A perceptible effect on the equivalent pressures in the cathode and anode, is observed in the area of activation zone on the curves ($0 - 0.15 \text{ A/cm}^2$), this is attributed to a high concentration of reagents on the catalytic layer of the electrodes. No anomaly behavior is observed on the ohmic losses zone on the curves ($0.15 - 1.3 \text{ A/cm}^2$). The diffusion losses zone on the curves starts between 1.3 and 1.7 A/cm^2 , depending on the level pressure applied.

Figure 11 shows a comparison between the behavior of current density (A/cm^2) at maximum power (W) developed by the PEMFC in the conditions of varying pressure on the cathode and equivalent pressures in both compartments. In both cases, the current density at maximum power developed as a function of pressure does not change significantly, however there is a significant increase in maximum power developed of the PEMFC when is applied equivalent pressures in both compartments. Thus, the maximum power developed of the PEMFC is a function then the potential that develops in the cell in function of the pressure applied, being in agreement with the Nernst's equation (equation 1).

At equivalent pressure, the value of the power of the PEMFC is dependent also of greater concentration of reagents depending on the pressure in both compartments, thus the concentration of hydrogen on the catalytic surface of the CCMA ensemble, presents a non-negligible contribution (change on slope) compared with the powers obtains from fixed anode pressure and variable cathode pressure. This behavior can be attributed to better conditions of distribution in the flow of reagents, as compared with traditional porous electrodes with a double diffusion layer (tissue and carbon agglomerates, see Figure 2), used in previously work reported [29]. The improvement referred is attributed in this case to the imple-

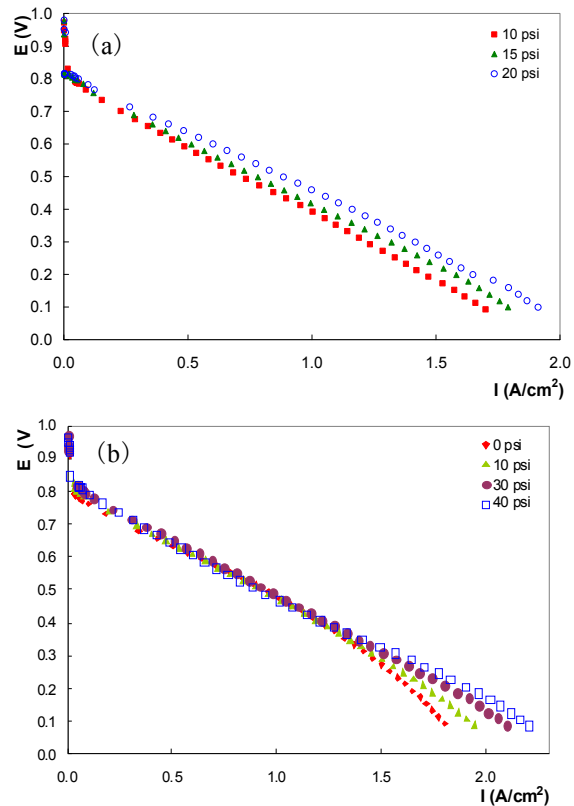


Figure 11. Functionality of a PEMFC with a porous graphite distributor such as monopolar plate: (a) Fixed anodic pressure at 5 psi with variable cathodic pressure and (b) a equivalent pressure in both compartments (anode and cathode).

mentation of graphitized paper as a gas diffusion media to presents lower restrictions (thickness) to the mass diffusion of reagents and products. The comparison of results is consistent with the proposed by Beuscher over the thickness of the diffusion layer and its effect on the functionality of the PEMFC [18].

Figure 12 includes the polarization curves for a PEMFC operating with a GDMR of graphite as reagents distributor at diverse pressure conditions on catalytic surfaces (anode and cathode) for this study. Figure 12.a shows the curves of PEMFC functionality at fixed anodic pressure (5 psi) and variable cathodic pressure (10, 15 and 20 psi). Figure 12.b includes the curves of the PEMFC functionality at pressures equivalent to the both compartments of reagents (hydrogen and oxygen). In both figures, the activation losses zones on the curves are not well defined and the polarization curves

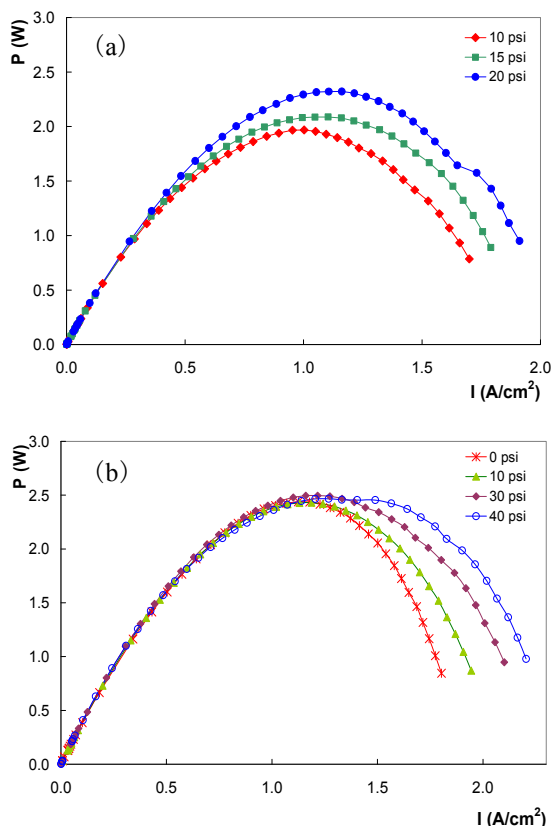


Figure 12. Curves of electrical power developed by a PEMFC with a porous graphite distributor as a monopolar plate: (a) Fixed anode pressure at 5 psi pressure with variable cathodic pressure and (b) an equivalent pressure in both compartments (anode and cathode).

beginning at values between 0.8 and 0.85 V, this low value (normally, around 1 V) may indicate an electrical contact problem or electrode degradation. In other way, both figures (a and b) show a different behavior for ohmic losses in comparison at the case with a serpentine distributor, in this case, it's observed a quasi-linear slope on the polarization curves. Additionally, the diffusion area on the polarization curve is not observed at any level pressure in Figure 12.a, considering an important reduction in transport resistances at high current densities by using the GDMR as reagents distributor. When variable cathodic pressure is applied on the PEMFC (Figure 12.b), the increase on the polarization's curves is a result of the higher oxygen concentration arriving on the reactive surface in function of level pressure applied. However, a leap in current density is observed on the zone of diffusion losses (1.7 A/cm² and 0.2 V), this electrical current leap affect the power generated by the PEMFC (Figure 13.a). This effect is attributable to a significant change in the potential of the PEMFC as a function of the concentration of oxygen into the pores of RGDM by effect of pressure increase in accordance with the Nernst equation. In the pores of RGDM, some molecules of reagents and products can be attached to the wall by difference in the electric charges between the both surfaces (RGDM and molecules), mainly at low speed levels (low

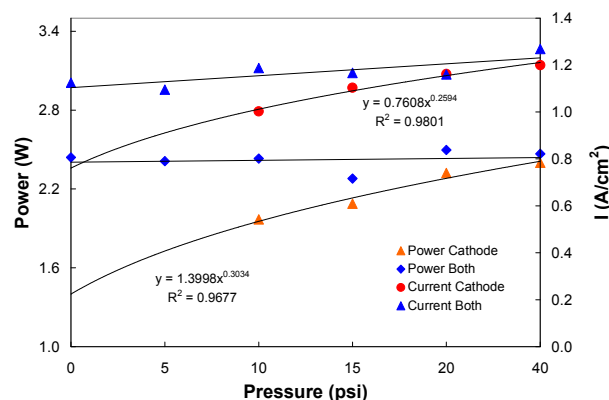


Figure 13. Graphic comparison between power and current density, both in function of conditions of varying pressure in the cathode and equivalent pressures to the compartments (Both).

pressure) where is possible to form a film of molecules adhering to the wall of the pores, reducing the effective diameter of flow and consequently the concentration of reagent on the catalytic layer, affecting the PEMFC efficiency. One way to restore the concentration of reagent on the active sites is to increase the flow rate by increasing the pressure of the system, according to the Nernst equation but it's possible to remove this film of molecules when it's applied a highest pressures, in this conditions, an unexpected increase in the oxygen concentration arrive to the active sites and increasing the power too. In other hand, Figure 12.b shows the functionality of the PEMFC when a pressure equivalents of reagents are applied on both electrodes, here the ohmic characteristics in all cases are equivalents for all pressure levels applied in the study and the diffusion losses are observed only at low pressure levels (5 and 10 psi), this behavior involve a violation of the Nernst's law (equation 1) in the zone of ohmic losses on the polarization curves. This behavior seems to indicate that they have reached the maximum conditions of PEMFC functionality to the form independent of pressure. This behavior confirms the effect of pressure on the speed velocity of reagents and products in the pores of RGDM, reducing the mass transport limitations at high pressure levels (>10 psi).

Kong and colleagues [8] have obtained similar results generating a diffusion layer in electrodes with an increasing in the number of macropores during manufacturing, so the resistance of diffusion is significantly reduced at high current densities. Kong proposes an effect of the morphology of the layer of diffusion in porous electrodes on the phenomena in the double electrochemical layer, affecting the structure of the active layer and the effective area of reaction. In the other hand, Maslii and colleagues [31] have demonstrated the effect of electroconduction of a porous matrix (Ks) on the distribution of current flow and efficiency of operation in porous electrodes (PE), the largest effect occurs if Ks varies within the PE. Maslii proposes a decrease of Ks in the most charged region in the electrode, leading to profound shifts in the current and polarization in PE and this condition improving only when the PE equi-polarized. A change of the inverse profile ks do these distributions more heterogeneous, even with the change of the signal from

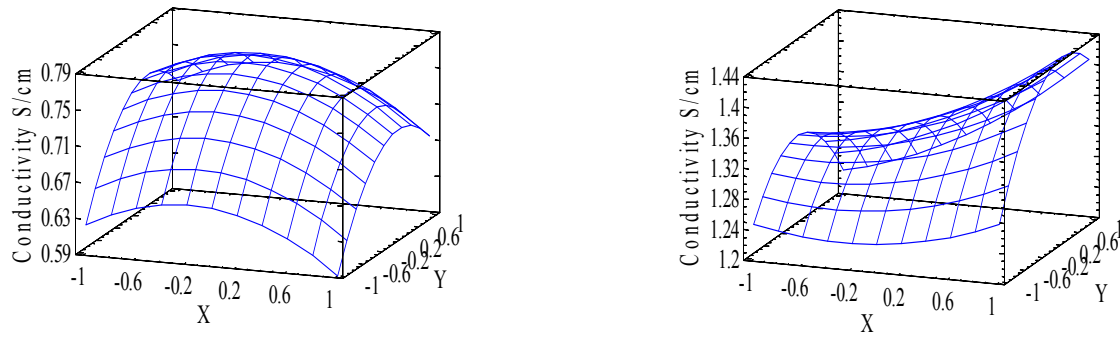


Figure 14. Surface response methodology for electrical conductivity in (a) GDMR distributor and (b) the serpentine channel distributor.

Table 2. Conductive characteristics of the material of graphite applied.

Distributor Type	Average Resistance (Ohm cm ²)	Median (Ohm cm ⁻¹)	Std Deviation (Ohm cm ⁻¹)	Average Conductivity (S cm ⁻¹)	Median (S cm ⁻¹)	Std Deviation (S cm ⁻¹)
Serpentine	0.784	0.767	0.097	1.294	1.304	0.145
GDMR	1.658	1.7	0.161	0.609	0.588	0.064

the main stream of the reaction and the appearance of an anodic porous zone inside the cathode. A change in K_s should also affect the ohmic tension drop in the solid phase and energy consumption. The study of Maslii focuses on PE composed of three identical layers of carbon powders with various thickness and electrical conductivity, its conclusion that the ohmic losses in PE depend on the average value of K_s and its profile in the thickness of the PE, as well Maslii establishes a dependence to value of K_s and the effective electrode surface, resulting the second in function of the porosity of the electrode.

Figure 13 shows the power curves of the PEMFC corresponding to curves in Figure 12. Here, at variable cathodic pressure conditions, the power curves behave similarly to the case of a channels distributor, that is; the maximum power is increased as a function of cathodic pressure (Figure 11). However, at equivalent pressure conditions in the compartments, the maximum power values are very close for all cases, while the maximum point of power only moves to highest current densities as a function of applied pressure in both compartments. This effect may suppose that maximal PEMFC performance is arrived at low pressure levels with RGDM by reduction of mass transport limitations and a non-negligible contribution from the anode to these conditions is observed on the PEMFC functionality. In the other hand, the effect of pressure when using RGDM in the diffusion zone is observable on the polarization curve of the PEMFC, also impacting the power developed by the fuel cell to current densities greater than 1.3 A/cm² (Figure 12. b). Moreover, at 40 psi pressure of anodic and cathodic, there are 2 maximum points of power developed for the PEMFC around 2.5 W, the first at 1.27 A/cm² and the second at 1.49 A/cm², however with serpentine channels distributor is possible to obtain around of 3.2 W at 40 psi. These results may suppose that all these observations may be attributed to a participation of the RGDM as an integral part of the electrode, and secondly this composite electrode shows be sensitive to the presence of different interfacial phenomena compared to the case of the polar plate with distribution channels in serpentine form, caused by the pores and the struc-

ture of the electro-conductive matrix as Maslii shows in its study.

Figure 14 shows a comparison between the behavior of current density (A/cm²) at maximum power (W) developed by the PEMFC using the RGDM for both pressure conditions studied. In the case of variable cathodic pressure, the curves of current density and electric power obey mathematical power functions with increasing values towards higher pressures. The slopes of the curves of power and current density for the case of equivalent pressures obey to quasi-linear functions, this behavior may indicate that electrochemical mechanisms and mass transport phenomena are different for both pressures conditions using the RGDM as reagents distributor. Additionally, three important characteristics are shown in Figure 14, the first is the behavior almost constant in the value of electric power observed independently of the level of equivalent pressure applied (from 0 psi), while the current density increases slightly. This behavior can be explained by reaching the largest mass transport conditions of reagents to the reaction sites by the high value in the diameter pore in the RGDM.

The second notable feature is observed in the curves of power and electrical density by anodic contribution at equivalent pressures in the experimental conditions applied, mainly to low levels of pressure. This behavior can be explained by the stoichiometric ratio applied as pressure function in the gases flow. Finally, the electric power and current density generated by the PEMFC are lower for both cases studied (expressed in the graph 12), in comparison to those in Figure 11, there is a drop in tension and energy (power) developed by the PEMFC associated to the RGDM used as gas distributor.

In other hand, statistical values about the conductive surface characteristics on the surfaces of reagents distributors used are presented in Table 2. In general the electrical conductivity of the distributor channels in graphite is about twice the value of GDMR, attributable to more open matrix graphite. In the other hand, in both systems PEMFC studied copper plates are used as mechanical support and current collector, where the graphite plates transferring the current generated by the MEA. Under these conditions, the surface

of electrical contact for the distributor coil is 5×5 cm while in the diffusive distributor is approximately 1.5×1.5 cm.

Figure 15 shows graphs of surface response methodology for the conductivity on the surfaces of reagents distributors under study. It observes in both cases heterogeneous surfaces with respect to the electrical conductivity of surfaces with different levels conductive. In the case of the GDMR distributor, the conductivity shows a maximum value at the center of the surface with the lowest values towards the edges where it is located electrical contact with the copper plates as current collectors, this allow assume limitations of electronic transport between the RGDM and the cooper current collector, in addition to the levels of conductivity, their profiles and the area of electrical contact between the GDMR and the copper plate (2.25 cm^2). In comparison, the serpentine channel distributor shows a conductive surface with increases in the center and right of the surface, their values are twice those observed in GDMR and its contact surface with the current collector is 25 cm^2 .

The results presented allow the authors to consider that in the experimental PEMFC, the GDMR used as distributor for the reagents has been integrated as part of a composed electrode with the graphitized paper and CCMA. The ohmic losses with lines behavior and reduction of power developed by the experimental PEMFC compared with conventional design can be explained in terms of proposed of Maslii and colleagues [31], that is: A change in the electro – conduction of graphite matrix affects the ohmic drop in the solid phase increasing the electronic conduction limitations in the graphite matrix (ohmic limitations) and also the energy loss as a result of these limitations (loss of electric power in the form heat).

4. CONCLUSIONS

A comparative study between the functionality of a PEMFC has been presented in this work. The principal difference involves the application of a rigid gas diffusion media as a reagents distributor with a serpentine channel distributor, both manufactured with mixes of carbon and graphite powder. In general, the GDMR becomes a diffusion layer, integrating a composite electrode with the graphitized paper and CCMA. Under conditions of variable cathodic pressure, the response of the GDMR becomes a combined distribution plate (conductive and diffusion mass transport), favoring the increase in current density and power developed by the PEMFC in pressure function. However, at same pressure level on the both electrodes, the RGDM distributor becomes to diffusion layer promoting the reduction in resistance to the mass transport of reagents and products. In this condition the maximum power developed by the PEMFC is obtained since very low pressure levels, and it observe almost constant values when the pressure increase in the gas flow feted. However, the conductive structure matrix in the RGDM increases markedly the ohmic resistance and increases the power losses along the functionality of the PEMFC in comparison with a conventional PEMFC design.

5. ACKNOWLEDGMENTS

The authors thanks at Alter Energias Grupo for partial financial support to this study. Also at Department of Chemistry of Cinvestav for materials and laboratory, and Professor Octavio Olivares Xómetl of Chemical Engineering Faculty, BUAP for Optical Microscopy.

REFERENCES

- [1] Fuel Cell Handbook EG&G Services, Parsons Inc. 5th Edition, USA, 2000.
- [2] V.S. Bagotzky, N.V. Osetrova and A.M. Skundin, Russian Journal of Electrochemistry, 39, 919 (2003).
- [3] P. Costamagna, S. Srinivasan, Journal of Power Sources, 102, 242 (2001).
- [4] J. Larminie and A. Dicks, Fuel Cell Systems Explained. Ed. Wiley 2nd edition, 2003.
- [5] Ton van der Does, Journal of Power Sources, 61, 49 (1996).
- [6] D.L. Wood III, J.S. Yi and T.V. Nguyen, Electroquímica Acta, 43, 3795 (1998).
- [7] P. Costamagna, S. Srinivasan, Journal of Power Sources, 102, 253 (2001).
- [8] Ch.S. Kong, D-Y Kim, H-K Lee, Y-G Shul, T-H Lee, Journal of Power Sources, 4725, 1 (2002).
- [9] C. Boyer, S. Gamburzev and A.J. Appleby, Journal of Applied Electrochemistry, 29 1095 (1999).
- [10] K-H Choi, D-H Peck, Ch.S. Kim, D-R Shin, T-H Lee, Journal of Power Sources, 86, 197 (2000).
- [11] J.J. Baschuk, Xianguo Li. Journal of Power Sources, 86 181 (2000).
- [12] V.A. Paganin, E.A. Ticianelli, E.R. Gonzalez. Journal of Power Sources, 70, 55 (1998).
- [13] D.R. Sena, E.A. Ticianelli, V.A. Paganin, E.R. Gonzalez, Journal of Electroanalytical Chemistry, 477, 164 (1999).
- [14] S.A. Grigor'ev, Russian Journal of Electrochemistry, V 40, 11, 1188 (2004).
- [15] Zhigang Qi. Journal of Power Sources, 109 469 (2002).
- [16] S. Dutta, S. Shimpale and J.W. Van Zee, Journal of Applied Electrochemistry, 30, 135 (2000).
- [17] Sandip Dutta, Srivatch Shimpale, J.W. Van Zee, International Journal of Heat and Mass Transfer, 44, 2029 (2001).
- [18] Uwe Beuscher, Journal of the Electrochemical Society, 153, 9, A1788 (2006).
- [19] M.S. Wilson, S. Gottesfeld, Journal of Applied Electrochemistry, 22, 1 (1992).
- [20] Costamagna P., Srinivasan, S.J., Power Sources, 102, 242 (2001).
- [21] Costamagna P., Srinivasan S.J. Power Sources, 102, 253 (2001).
- [22] <http://irh.uqtr.ca/utilisation/piles/piles-combustible.pdf>
- [23] Mosdale, R, "Etude et developement d'une pile á combustible hydrogène/oxygène en technologie electrolyte polymère solide". Grenoble, Thèse INPG (1992).
- [24] Budevski E.J. Optoelectronic and Advanced Materials 5, 1319 (2003).
- [25] Antoine O. "Préparation et activité électrocatalique des nanoparticules de platine dans les électrodes de piles á combustible á membrane échangeuse de protons". Grenoble, Thèse INPG (1998).
- [26] Song, S.M., Koo, I.G., and Lee, W.M. Electrochim. Acta, 47, 2413 (2002).

- [27] Lee, S., J. Mukerjee, S. Ticianelli and E.A. McBreen, *J. Electrochim. Acta*, 44, 3286 (1999).
- [28] E. Antolini, R.R. Passos and E.A. Ticianelli, *J. of Applied Electrochemistry*, 32, 383 (2002).
- [29] C. Moisés Bautista-Rodríguez, Araceli Rosas-Paleta, Andrés Rodríguez-Castellanos, J. Antonio Rivera-Márquez, Omar Solorza-Feria, J. Antonio Guevara-García, J. Ignacio Castillo-Velázquez. *International Journal of Electrochemical Science*, 2, 820 (2007).
- [30] K. Suárez-Alcántara, A. Rodríguez-Castellanos, S. Durón-Torres, O. Solorza-Feria, *J. Power Sources*, 171, 381 (2007).
- [31] I.A. Maslil, N.P. Poddubnyi and A.Zh. Medvedev, *Russian Journal of Electrochemistry*, 40, 218 (2004).
- [32] C. Moisés Bautista-Rodríguez, Araceli Rosas-Paleta, J. Antonio Rivera-Márquez, Omar Solorza-Feria. *Int. J. Electrochem. Sci.*, 4, 43 (2009).
- [33] C. Moisés Bautista-Rodríguez, Araceli Rosas-Paleta, J. Antonio Rivera-Márquez, Omar Solorza-Feria. *Int. J. Electrochem. Sci.*, 4, 60 (2009).